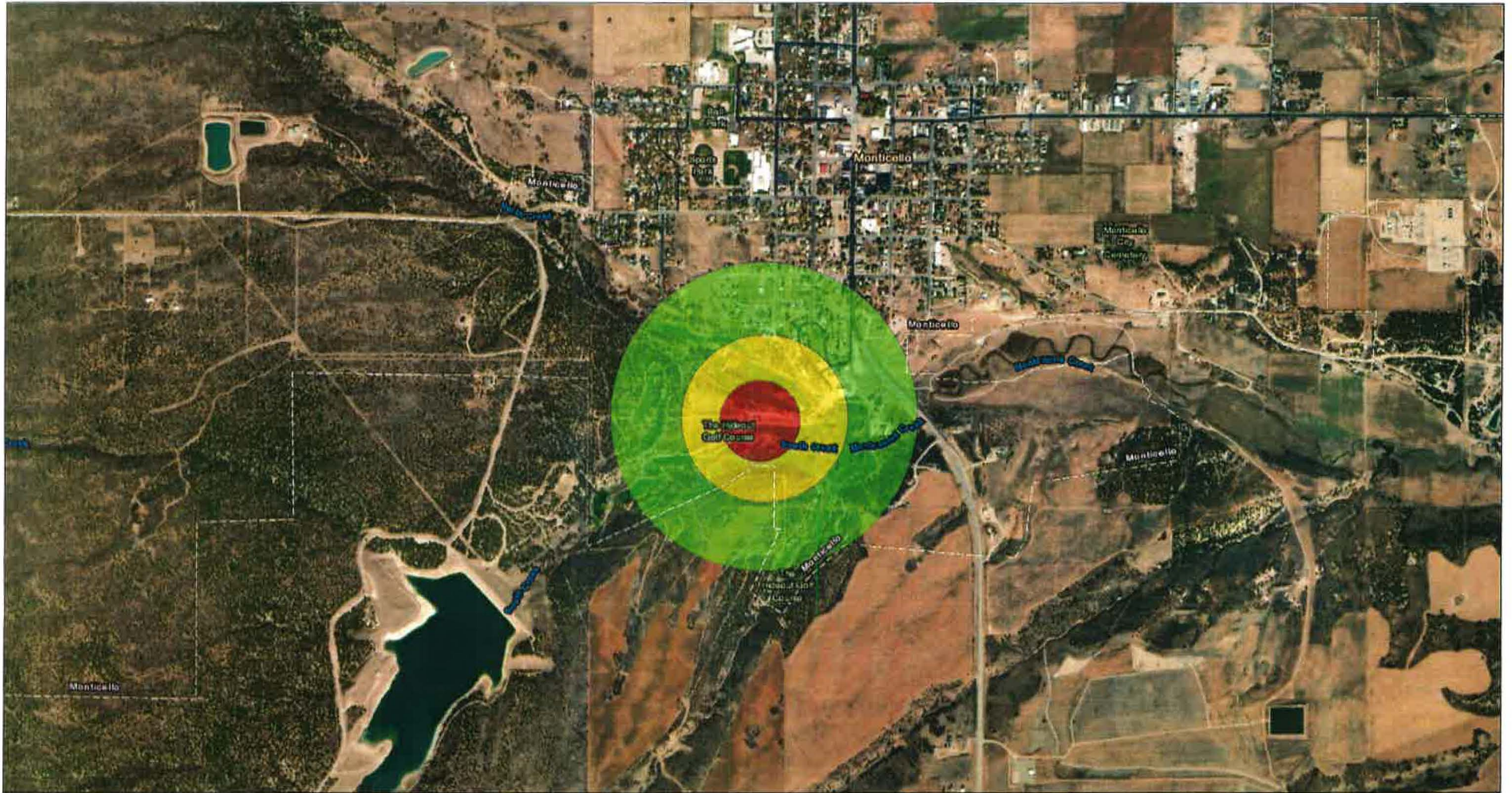
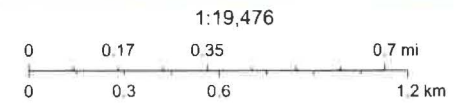


Source Protection Zones Hideout Well

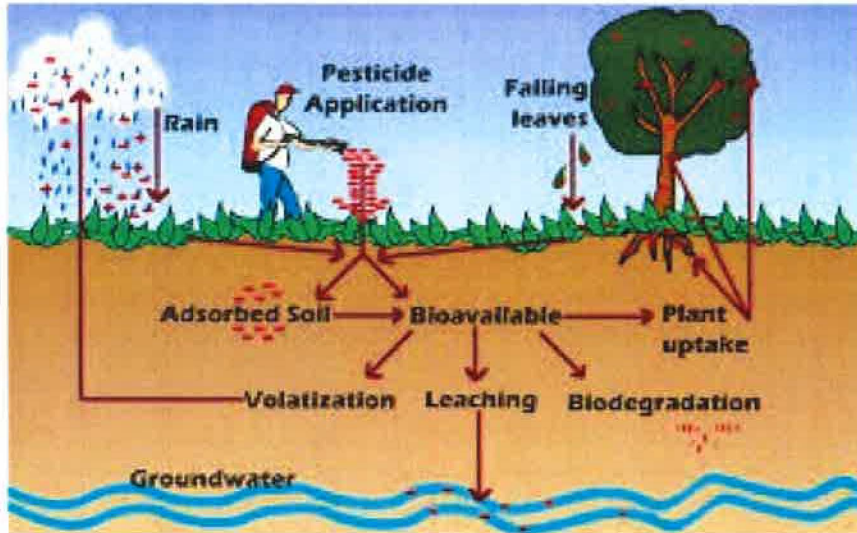


2/13/2024



Esri, HERE, Garmin, IPC, Maxar

GROUNDWATER SOURCE PROTECTION



WHY IS GROUNDWATER PROTECTION IMPORTANT?

Just like our mountain streams from the Abajo Mountains, our groundwater must be protected. Our water is blended with these sources depending on demand and supply. During periods of low water supply The Hideout well is pumped into our drinking water system and blended with water from Blue Mountain Springs Water Treatment Plant

GROUNDWATER SOURCE PROTECTION ORDINANCES

To help protect our groundwater, Monticello City adopted Amendments to Water & Sewer; Title 8; Monticello City Drinking Water Source Protection Ordinance.

To ensure the provision of a safe and sanitary drinking water supply for the City by establishing drinking water source protection zones. surrounding the wellheads and collection areas for all sources for the City water system and by the designation and regulation of property uses and conditions which may be maintained within such zones.

YOU CAN HELP PROTECT GROUNDWATER

Businesses are not the only ones responsible for protecting groundwater. Groundwater source protection requires the cooperation of everyone living and working in the protection area. Never dispose of chemicals or hazardous materials on the ground. These materials can migrate through the soils and impact groundwater.

RESOURCES AND BEST MANAGEMENT PRACTICES

We can each take action at our businesses, in our homes and garages, and throughout the community to protect our groundwater. For more information, please visit the following resources:

[Environmental Protection Agency-How Can You Help Protect Source Water?](#)

[Environmental Protection Agency-Citizen's Guide to Groundwater](#)

[Utah Division of Drinking Water Groundwater Source Protection and BMPs](#)

[National Groundwater Association-Groundwater Protection](#)

[Salt Lake County-Household Hazardous Waste Information](#)

[Best Management Practices Pollution Prevention Fact Sheet](#)